

MOBILE DATA CENTER



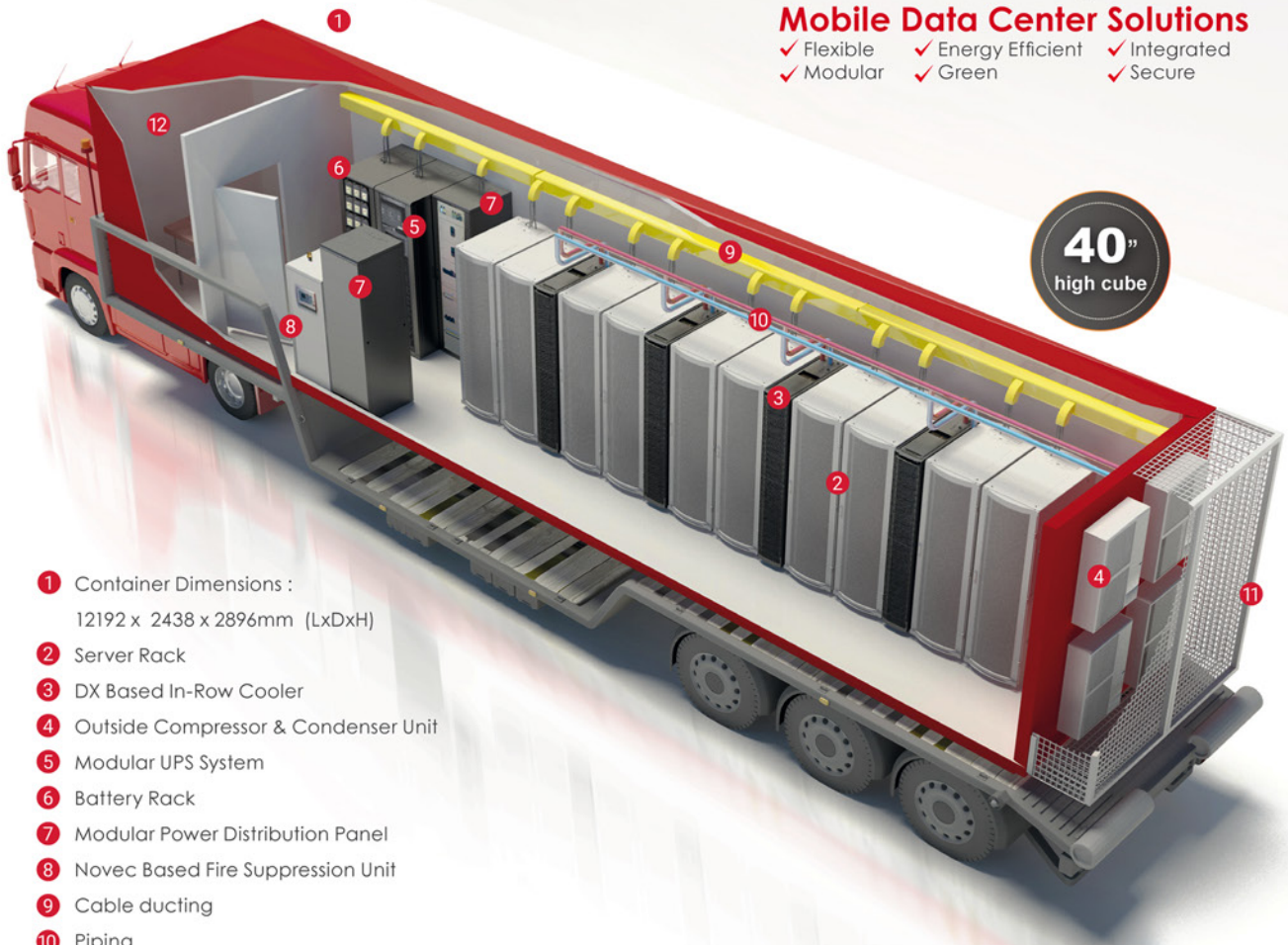
CANOVATE®
MOBILE DATA CENTER

Canovate® offers modular and green

Mobile Data Center Solutions

- ✓ Flexible ✓ Energy Efficient ✓ Integrated
- ✓ Modular ✓ Green ✓ Secure

40"
high cube



- 1 Container Dimensions :
12192 x 2438 x 2896mm (LxDxH)
- 2 Server Rack
- 3 DX Based In-Row Cooler
- 4 Outside Compressor & Condenser Unit
- 5 Modular UPS System
- 6 Battery Rack
- 7 Modular Power Distribution Panel
- 8 Novec Based Fire Suppression Unit
- 9 Cable ducting
- 10 Piping
- 11 Protection Grill for Outdoor Units
- 12 Admin Room

Mobile Container



The mobile container provides a protected housing for the server cabinets, power distribution system, cooling system, monitoring system, fire control system, and lighting system.

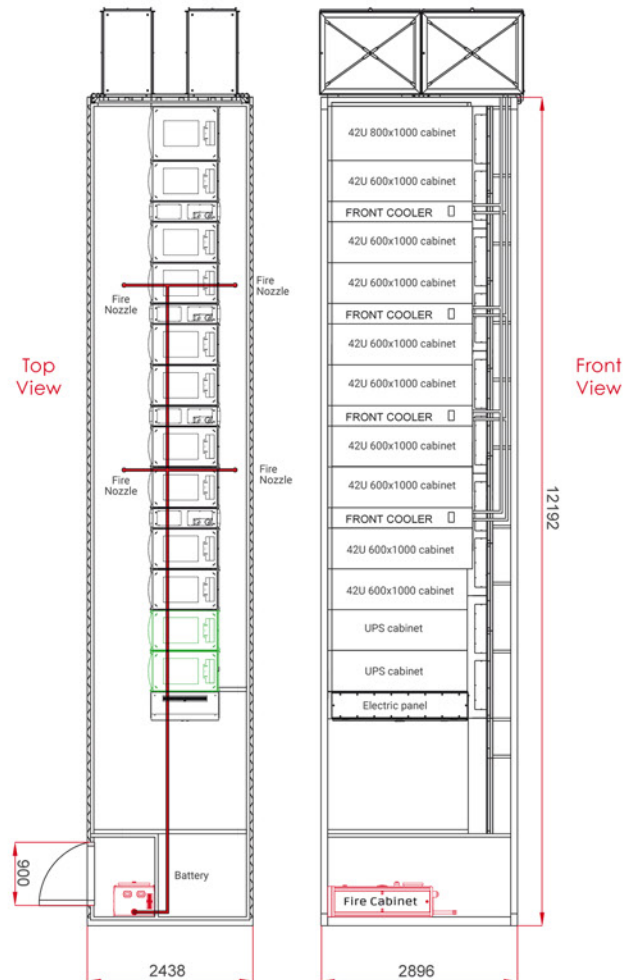
The container performs the following functions:

- Houses the container components which can be interconnected inside in a centralized and manner.
- Provides a protected environment to protect the container from external impact

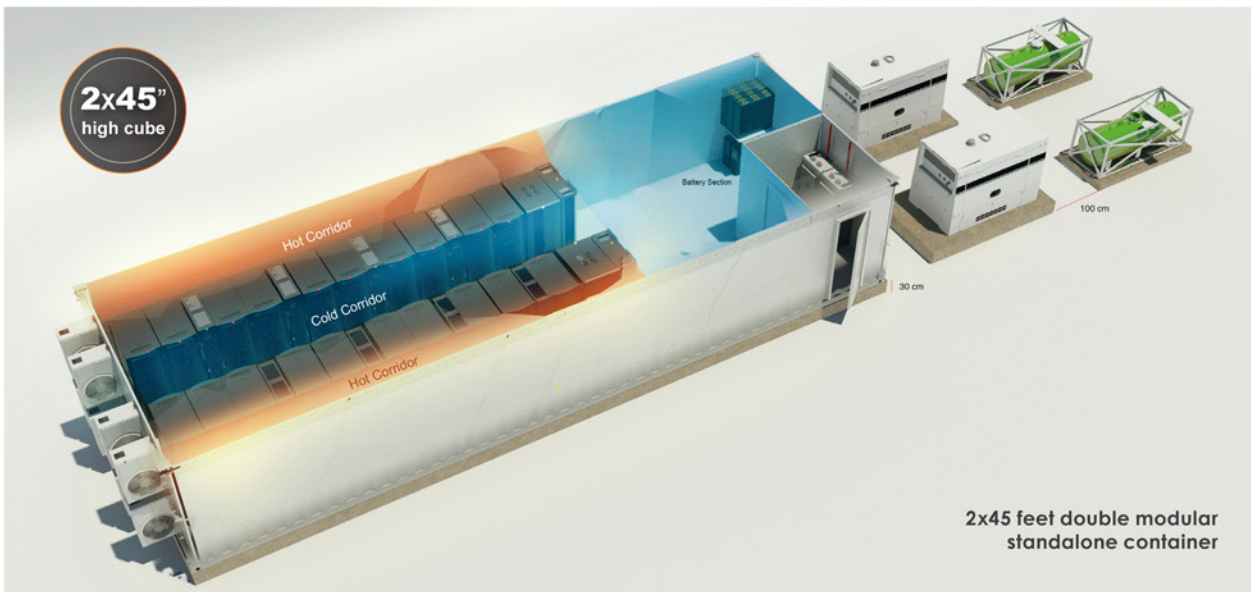
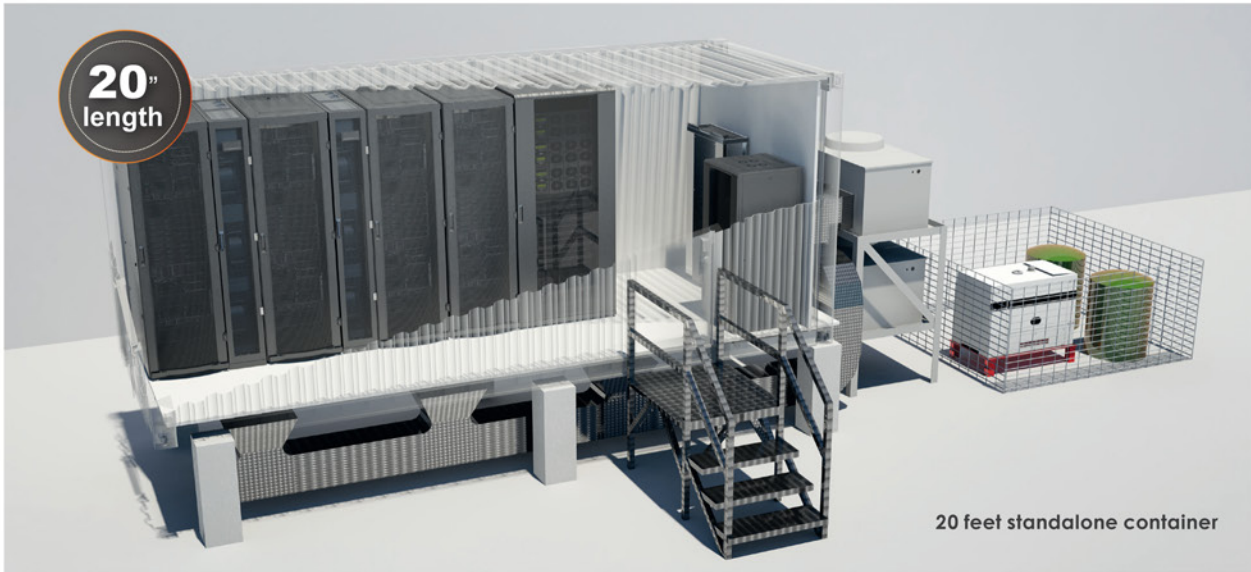
Technical Specifications:

1. Container / Shelter size : 12192 mm x 2438mm x 2896mm (high cube : 40 ft)
2. Outer / Inner sheet : Pre-painted Galvanized GI Sheet
3. Sheet Thickness : 0.6mm
4. Rockwool insulation thickness : 50mm overall
5. Floor Panel : 100 mm thickness (19mm plywood with 80 mm rockwool insulation and 0.6 mm sheet thickness)
6. Primary roof
7. 1 mtr extended ISMB / ISMC
8. Cable Tray
9. Door lock system

Internal Layout of Container



Other Mobile Data Center Configurations



MOBILE DATA CENTER



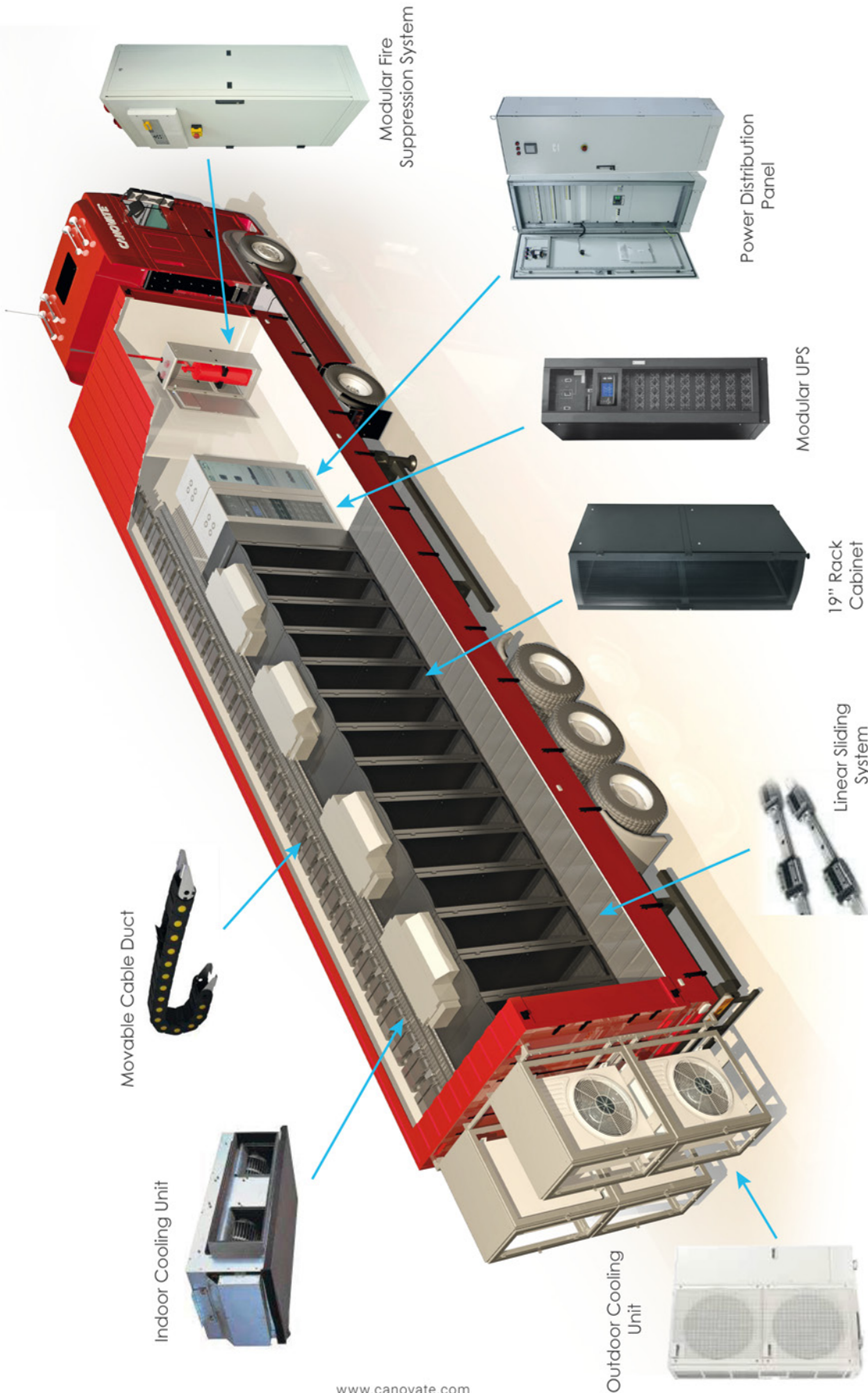
**CAN-IAC[®] Indirect Adiabatic Cooling Solution
for Mobile Data Center**

CANOVATE[®]
MOBILE DATA CENTER

www.canovate.com

39

Top Cooling Solution for Mobile Data Center



www.canovate.com