

Cold & Hot Aisle Containment System

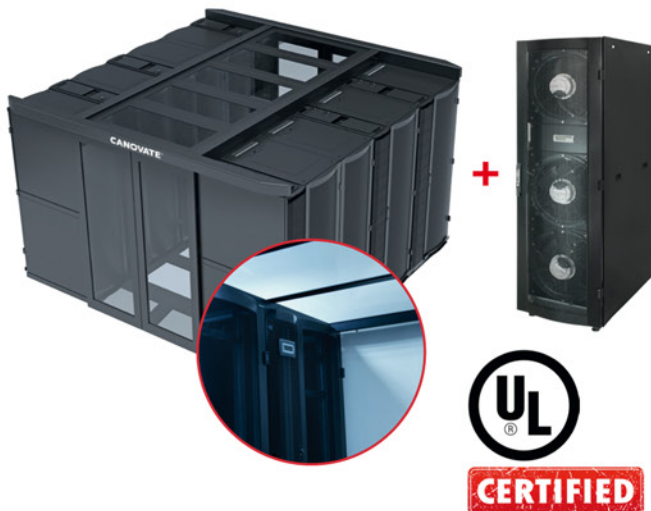


- Enables isolation of hot and cold aisles to maximize cooling system efficiency and minimize cooling energy requirement
- Highly modular, scalable, expandable, and retrofitable
- Optimum cooling solution for big and medium scale Data Centers coupled with CRAC units to increase efficiency of cooling system
- Provides moderate efficiency, energy saving and free cooling capabilities

Advantages:

- More efficient than traditional central CRAC cooling technologies up to 50% energy savings
- Modular, scalable, expandable, retrofitable

Cold Aisle Containment + In-Row Cooler



- Cold & Hot Aisle Containment System coupled with In-Row Cooler system ensures ultimate cooling capacity enabling highest levels of energy efficiency
- Optimum solution for medium to large scale Data Centers
- A chilled-water based technology bringing cold air right to the server racks where heat dissipation is maximum, eliminating raised floor requirement in contrast to CRAC cooling systems.

Advantages:

- Eliminates raised floor requirement
- Ultimately more efficient than traditional CRAC based cooling
- Industry leading cooling capacity enabled by 60kW In-Row Cooling System
- Water based cooling – A totally Green IT Solution
- Free-cooling capability is significantly higher than CRAC cooling systems, for ambient temperatures below 14°C

In-Row Cooler (Front Cooler)

- In-Row Cooler is an ultimate solution for medium to large scale data center applications
- A chilled-water based technology bringing cold air right to the server racks where heat dissipation is maximum, eliminating raised floor requirement in contrast to CRAC cooling systems
- Integration into Cold & Hot Aisle Containment Systems yields industry leading cooling efficiency performance

Advantages:

- Significantly more efficient than traditional CRAC based cooling
- Free-cooling capability is considerably higher than CRAC units ($\leq 14^{\circ}\text{C}$)
- Eliminates raised floor requirement
- Water based cooling – Totally Green IT
- Industry leading cooling capacity up to 60kW



W: 600 mm



W: 300 mm



CERTIFIED

Cold & Hot Aisle Containment



- Increase server performance and cooling efficiency in Data Centers
- Energy savings up to 50%
- Modular Concept
- Retrofittable
- Cooling capacity of up to 10kW per rack
- Green IT
- Complete system solution:
 - Power management
 - Monitoring
 - Cooling
 - Security
- Efficient energy management
- Return on investment within 30 months



Top Cover

Easily removable tempered glass panel to maximize the available light and reduce fire risk.



Skirt Type Blanking Panel

Closes the gap between 19" mounting rails and side panels. Enables zero U patch panel fitting and cable management.

Accessories:

Raised Floor



Cold & Hot Aisle Containment System must be built on raised floor to maximize cold air intake efficiency.

Brush

Dust protection



Swing or Sliding Doors

Swing Doors



Sliding Doors

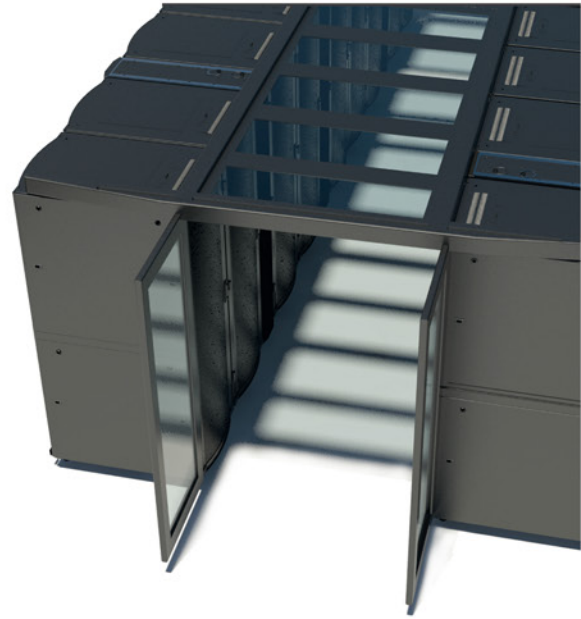


Manual or electronic locking Sliding Door systems for access management.

Blanking Panels



Aisle Entrance Door



1 Aisle Entrance Door

Sliding Door Manual System

Product Code	Product Description
DC-D1-X-42220	1200 mm width, For 42U Cabinets
DC-D1-X-47220	1200 mm width, For 47U Cabinets

Sliding Door Automatic System

Product Code	Product Description
DC-D4-X-42220	For 42U Cabinets, 1200 mm width (Button)
DC-D4-X-47220	For 47U Cabinets, 1200 mm width (Button)
DC-D4-X-42220-P	For 42U Cabinets, 1200 mm width (Finger-print Reader)
DC-D4-X-47220-P	For 47U Cabinets, 1200 mm width (Finger-print Reader)
DC-D4-X-42220-K	For 42U Cabinets, 1200 mm width (Key Pad)
DC-D4-X-47220-K	For 47U Cabinets, 1200 mm width (Key Pad)
DC-D4-X-42220-C	For 42U Cabinets, 1200 mm width (Card Reader)
DC-D4-X-47220-C	For 47U Cabinets, 1200 mm width (Card Reader)

Swing Door Manual System

1 piece Left Door Panel, 1 piece Right Door Panel

Product Code	Product Description
DC-D3-X-422Y0	For 42U Cabinets, 1200 mm width
DC-D3-X-472Y0	For 47U Cabinets, 1200 mm width

Accessories:

Skirt Type Blanking Panel

2 pcs Blanking Panel between 19" mounting rail and cabinet profile

Product Code	Product Description
DC-B3-X-428Y0	For 42u 800 width cabinet
DC-B3-X-478Y0	For 47u 800 width cabinet
DC-B3-X-426Y0	For 42u 600 width cabinet
DC-B3-X-476Y0	For 47u 600 width cabinet

Baying Kit 4 pieces in a set

Product Code	Product Description
DC-B5-X-YYYY0	Front&rear Baying kit

Plinth

H (mm)	W (mm)	D (mm)	Part No
60	300	1000	DC-B6-X-YY300
60	300	1200	DC-B6-X-YY320
60	600	1000	DC-B6-X-YY600
60	600	1200	DC-B6-X-YY620
60	800	1000	DC-B6-X-YY800
60	800	1200	DC-B6-X-YY820

2 Top Cover

Product Code	Product Description
DC-T-X-YY3Y0	For 300 mm width cooler, 1200 mm depth
DC-T-X-YY6Y0	For 600 mm width cabinet, 1200 mm depth
DC-T-X-YY8Y0	For 800 mm width cabinet, 1200 mm depth

* X : Color code = 7: RAL 7035 (Grey); 9: RAL 9005 (Black)

Maxi Data Center Solutions Field Application Photos



Maxi Data Center Solutions Field Application Photos

