

# LION PLUS

SERIES

## 650-2000 VA

LINE INTERACTIVE UPS



VI  
TYPE

UPS LINE  
INTERACTIVE



TOWER



PLUG &  
PLAY



USB



LCD DISPLAY  
(1000-1500-2000VA)

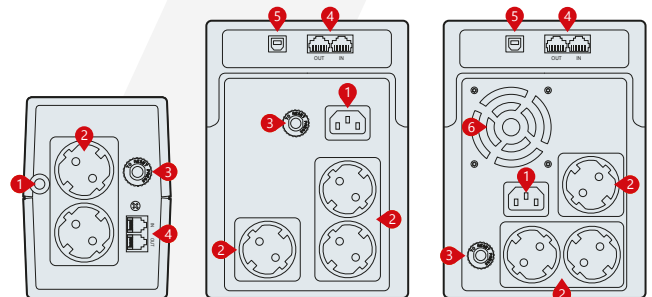


### FEATURES

- LED Display (650-850)
- LCD Display (1000-1500-2000)
- Microprocessor-Based Digital Control
- Automatic Voltage Stabilization
- Automatic Breaker
- Frequency Adaptive
- User Friendly Alarm System
- Cold Start
- Auto Restart while AC is Recovering
- Simulated Sine Wave Output
- Intelligent Battery Management
- Short Circuit and Over Discharged Protection
- Automatically Charging Battery at UPS Off Mode
- Shut Down when No Load Connected at Battery Mode
- USB Communication Port
- RJ11/RJ45 Protection

### DETAILS

1. AC Input
2. Outlet
3. Breaker
4. RJ11/RJ45
5. USB
6. Fan



Rear Panel  
650-850 VA

Rear Panel  
1000-1500 VA

Rear Panel  
2000 VA

### CERTIFICATES



MODEL						
Capacity		650VA / 390W	850VA / 510W	1000VA / 600W	1500VA / 900W	2000VA / 1200W
<b>INPUT</b>						
Related Voltage		220V / 230V / 240 VAC				
Voltage Range		162-290 VAC ±7%				
Frequency		50-60 Hz ±10%				
<b>OUTPUT</b>						
Voltage Range		220V / 230V / 240 VAC				
Voltage Precision		±10% (Battery Mode)				
Frequency	AC Mode	Same as Mains				
	Battery Mode	50-60 Hz ±1%				
Waveform		Modified Sine Wave				
Crest Factor		3:1				
Transfer Time		2~6ms, 10ms Max.		4~8ms, 10ms Max.		
Overload	AC Mode	110% + 20% / -10%; Shutdown after 5 minutes and go to Fault Mode for all Model				
		120% + 20% / -10%; Shutdown immediately and go to Fault Mode for 1B Model				
		120% + 20% / -10%; Shutdown after 8 sec and go to Fault Mode for 2B Model				
	Battery Mode	110% + 20% / -10%; Shutdown after 5 seconds 120% + 20% / -10%; Shutdown immediately				
<b>EFFICIENCY</b>						
Inverter Mode		Line Mode: >95%, AVR Mode: >88%				
Battery Mode		>60%				
<b>BATTERY</b>						
Battery Configuration		12V/7Ah*1	12V/9Ah*1	12V/7Ah*2	12V/9Ah*2	12V/9Ah*2
Charge Current		About 1A at Normal Mode				
Recharge/Charging Time		6 hours to 90% at Normal Mode after Complete Discharge (Load>50%)				
Backup Time		~16 min.	~20 min.	~30 min.	~50 min.	~50 min.
<b>PROTECTION</b>						
Full Protection		Discharge, Overcharge, Overload Protection		Discharge, Overcharge, Overload, Short Circuit Protection		
<b>INDICATION</b>						
AC Mode		Green LED Lighting		Green LED Lighting		
Battery Mode		Green LED Lighting		Yellow LED Lighting		
Fault		N/A		Red LED Lighting		
<b>ALARM</b>						
Battery Mode		Sounding every 10 seconds				
Battery Low		Sounding every 1 seconds				
Overload		Sounding every 0.5 seconds				
Fault		Continuously Sounding				
<b>OPERATING ENVIRONMENT</b>						
Temperature		0 ~ 40°C				
Storage Temperature		-20°C ~ 55°C				
Relative Humidity		0 to 90 °C				
Audible Noise (at 1m)		≤40 dB			≤45 dB	
<b>OTHER</b>						
Communication Port		USB				
Software		Windows Family / Linux / Mac				
<b>DIMENSIONS &amp; WEIGHT</b>						
Dimension (mm) WxDxH		100 x 278 x 143			139 x 365 x 195	
Packaging Dimension (mm) WxDxH		142 x 332 x 225			235 x 457 x 297	
Net Weight (kg)		4,35	5,15	9,07	10,74	10,74
Gross Weight (kg)		4,55	5,35	10,2	12	12

Makelsan reserves the right to change or modify product design, construction, specifications, or materials without prior notice and without incurring any obligation to make such changes and modifications on Makelsan products previously or subsequently sold. Makelsan does not guarantee the items of the accuracy and completeness.