

Inorax-09 Outdoor Cabinet

Technical Features

Material	Frame : Extruded aluminum, Doors and panels: Double layer aluminum/ galvanized steel (total material thickness of double layer can be up to 4 mm)
Protection Level	IP55
Tests	ETS 300019 and IEC 68-2-57 (Earthquake, shock, vibration, transportation tests), EN 60529 and IEC5291 (IP 55 dust and waterproof tests), EN 60950 (Electrical and mechanical safety tests)
Finish	Antigrffiti&sun reflecting epoxy polyester outdoor paint, if required DIN 50939 chromating
Technical Specifications	3 sections: 19" System + MDF + Power, 3 doors Top Mounted Heat Exchanger



Order Information

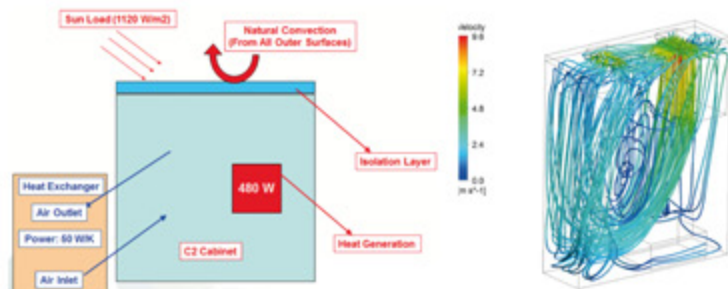
Height mm	Width mm	Depth mm	Part No
1700	1155	414	OAD-7-1001

Minimum Order Quantity:50 Pcs.

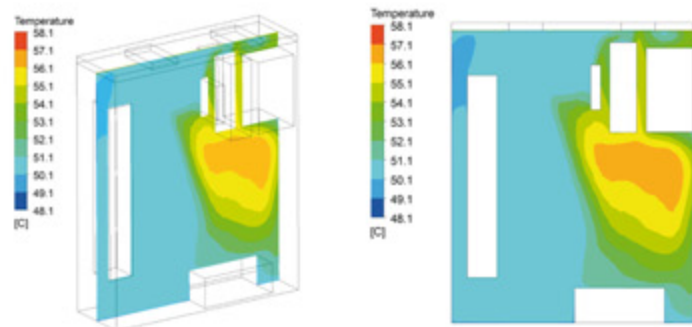
Thermal Test

Thermal study for extreme climatic conditions are done in approved laboratories

Boundary Conditions



Temperature Distributions
Streamlines, coloured with flow velocity



1 Double Skin Door



2 MDF Section



3 Power Box Section



4 19" Active Equipment Section

5 Top Mountable Heat exchanger

